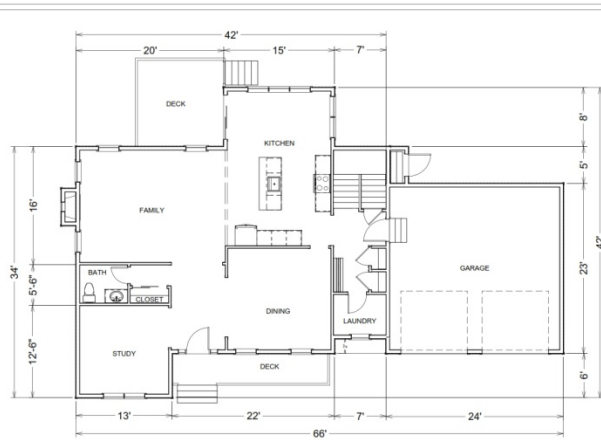
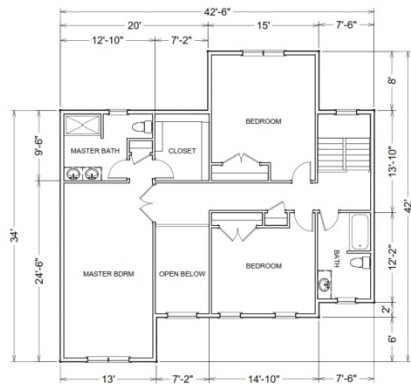


The Westport

2,686 s.f., 3 or 4 bedrooms, 2.5 bathrooms and 2 car garage



FIRST FLOOR PLAN



SECOND FLOOR PLAN

THE WESTPORT



FRONT ELEVATION



ALTERNATE ELEVATIONS

DRAWINGS PROVIDED BY:
Stonebridge Homes, Inc.

32 Norfolk Ave
South Easton, MA 02375
508-230-2300

AREA BREAKDOWN	HOUSE FEATURES
FIRST FLOOR 1,316 SF	BEDROOMS 3 OR 4
SECOND FLOOR 1,370 SF	BATHROOMS 2.5
TOTAL AREA 2,686 SF	GARAGE 2 CAR

NOTE: THESE PLANS & ELEVATIONS ARE SCHEMATIC & ARE SUBJECT TO MINOR CHANGE. SOME OPTIONS/UPGRADES ARE SHOWN.

BRIGGS
LANDING
~WESTPORT, MA~